

Door Fan Test according to ISO 14520

Minneapolis BlowerDoor FireProtection

Fire safety is one of the areas where the use of BlowerDoor measurements is increasingly gaining in importance. In general, it is server rooms that are measured, where in the case of fire, this is quenched by special extinction gases. High-quality technology can thus be protected against damage from sprinkling or fire water. A prerequisite for the fire protection through extinction gases is an airtight room envelope.

With the Minneapolis BlowerDoor measuring system and the FireProtection software, you can easily and accurately determine extinction gas holding times in accordance with ISO 14520 in rooms of angular volume.

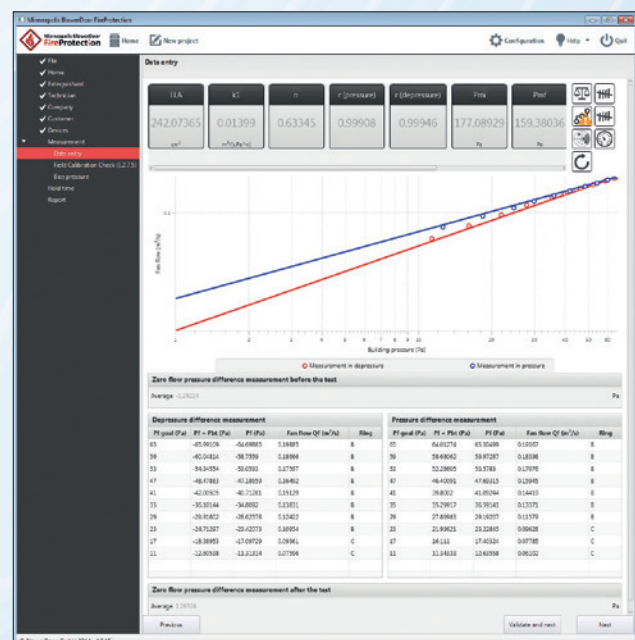
The measuring principle

The Door Fan Test according to ISO 14520 forms the basis for the measuring process. You first track the leakage at constant pressure using either, the measuring system BlowerDoor Standard, BlowerDoor Mini-Fan, or BlowerDoor MultipleFan and also carry out the Door Fan Test with either the TECTITE Express software or TECLOG.

For the fire protection measurement it is necessary to have an air interlocking around the server room to be measured. The data measured as well as the data of the Field Calibration Check tests are then read into the FireProtection software. (The Field Calibration Check test is another door fan test with a defined additional leakage and confirms the correct set-up and faultless functioning of the measuring systems.)



Minneapolis BlowerDoor
FireProtection

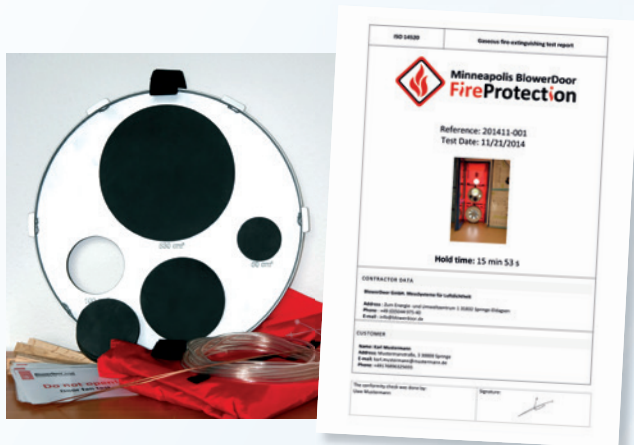


Specific indications, as for example the room height or the type of extinction gas used (see illustration on the right) are entered into the FireProtection program manually. Based on the existing data, the software calculates the extinction gas holding time.

Further functions like the integration of the calibration certificates in the test report in order to document the measuring accuracy of the testing equipment used as well as the data and user administration allow for a practical design of the working processes. The detailed test report is automatically generated as a Word document or an Open Office file.

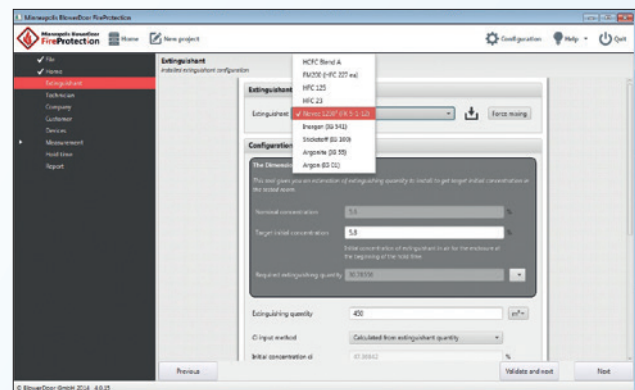
The measuring technology

The use of the FireProtection software requires knowledge of ISO 14520. You must use a Minneapolis BlowerDoor measuring system with a field check ring and accessories plus a laptop. With your purchase, you receive an unlimited workstation license for the unrestricted use of all BlowerDoor measuring systems (independent of the number of measuring fans).



BlowerDoor GmbH
MessSysteme für Luftdichtheit
Zum Energie- und Umweltzentrum 1
D-31832 Springe-Eldagsen

Phone +49 (0) 50 44 / 9 75 -40
Fax +49 (0) 50 44 / 9 75 -44
info@blowerdoor.com
www.blowerdoor.com



Features of BlowerDoor FireProtection

- The attractive program interface allows for intuitive use
- Configure and save your projects, customers, and measuring devices according to your needs
- Enter as many measuring devices and the corresponding calibration certificates as you want
- The automated door fan test offers the highest accuracy in the market
- Automatic import of the .bld files from the TECTITE Express or TECLOG software
- Computational and graphical presentation of the measuring results in the test report
- The BlowerDoor GmbH product line includes all accessories required for a door fan test according to ISO 14520
- The unlimited workstation license is valid for all BlowerDoor measuring systems (BlowerDoor MiniFan, BlowerDoor Standard, and BlowerDoor MultipleFan)

System Requirements

- Minneapolis BlowerDoor measurement system (BlowerDoor Standard, BlowerDoor MiniFan or BlowerDoor MultipleFan) with DG-700 or DG-1000 and software TECTITE Express 4.1/ 5.1, respectively TECLOG 4. BlowerDoor WiFi optional.
- Required accessories: BlowerDoor panel (standard size) with 2 openings, field check ring, sealing plugs (4 pieces), indicating labels (6 pieces), timber wedges (10 pieces), capillary tube (2 pieces à 40 cm each), 10 m tube (2 pieces), velcro strap (2 pieces)
- Microsoft Windows 8, 7, Vista, XP
- RAM: 1 GB min, 2 GB recommended
- Hard drive: 500 MB free minimum
- Reports: DOCX format, compatible with Microsoft Word 2007 and up, OpenOffice 3.3 and up or LibreOffice 3 and up